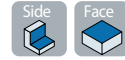
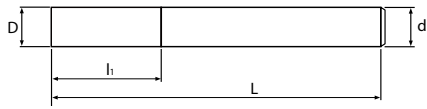


HMEL430

HY-MAX 긴 날장스퀘어엔드밀4날 헬릭스30°
HY-MAX Long Length Square End Mill 4-Flute Helix30°



* 적용피삭재(Applicable Work Material)
: 최적 (Most Suitable)
: 가능 (Applicable)



D≥6

P		H			M	S	N			
탄소강 Carbon Steels	합금강 Alloy Steels	프리하든강 Pre-Hardened Steels	열처리강 Hardened Steels			스테인레스강 Stainless Steels	내열합금강 Heat-resistant alloys	동 Copper	알루미늄합금 Aluminum Alloys	흑연 Graphite
S45C/S50C ~800 N/mm ²	SCM ~35HRC	NAK/HPM ~45HRC	SKD61 ~55HRC	SKD11 ~60HRC	SKH ~62HRC					

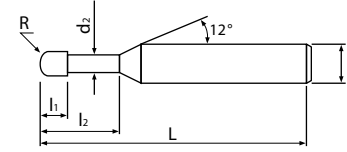
단위(mm)/Unit(mm)

모델번호 Model No.	인선직경 Dia of Mill	날장 Length of Cut	전장 Overall Length	샙크경 Shank Dia	비고 Remark
	D	L ₁	L	d	
HMEL430-06020-070-S06	6	20	70	6	
HMEL430-08030-080-S08	8	30	80	8	
HMEL430-08040-090-S08	8	40	90	8	
HMEL430-10040-100-S10	10	40	100	10	
HMEL430-10050-120-S10	10	50	120	10	
HMEL430-12040-100-S12	12	40	100	12	
HMEL430-12050-120-S12	12	50	120	12	
HMEL430-12060-130-S12	12	60	130	12	
HMEL430-12070-150-S12	12	70	150	12	
HMEL430-16060-130-S16	16	60	130	16	
HMEL430-16080-160-S16	16	80	160	16	

WMRB230



WIDE-MAX 리브볼 엔드밀2날 헬릭스30°
WIDE-MAX Rib Ball End Mill 2-Flute Helix30°



* 적용피삭재(Applicable Work Material)
: 최적 (Most Suitable)
: 가능 (Applicable)



R<3 R≥3 D<6 D≥6

P			H			M	S	N		
탄소강 Carbon Steels	합금강 Alloy Steels	프리하든강 Pre-Hardened Steels	열처리강 Hardened Steels			스테인레스강 Stainless Steels	내열합금강 Heat-resistant alloys	동 Copper	알루미늄합금 Aluminum Alloys	흑연 Graphite
S45C/S50C ~800 N/mm ²	SCM ~35HRC	NAK/HPM ~45HRC	SKD61 ~55HRC	SKD11 ~60HRC	SKH ~62HRC					

단위(mm)/Unit(mm)

모델번호 Model No.	볼반경 Radius of Ball Nose	유효장 Effective Length	날장 Length of Cut	목부경 Neck Dia	전장 Overall Length	샙크경 Shank Dia	비고 Remark
	R	L ₂	L ₁	d ₂	L	d	
WMRB230-001003-045-S04	R0.05	0.3	0.1	0.085	45	4	
WMRB230-001005-045-S04	R0.05	0.5	0.1	0.085	45	4	
WMRB230-0015005-045-S04	R0.075	0.5	0.15	0.13	45	4	
WMRB230-001501-045-S04	R0.075	1	0.15	0.13	45	4	
WMRB230-002005-045-S04	R0.1	0.5	0.2	0.18	45	4	
WMRB230-00201-045-S04	R0.1	1	0.2	0.18	45	4	
WMRB230-002015-045-S04	R0.1	1.5	0.2	0.18	45	4	
WMRB230-00202-045-S04	R0.1	2	0.2	0.18	45	4	
WMRB230-003005-045-S04	R0.15	0.5	0.3	0.27	45	4	
WMRB230-00301-045-S04	R0.15	1	0.3	0.27	45	4	
WMRB230-003015-045-S04	R0.15	1.5	0.3	0.27	45	4	
WMRB230-00302-045-S04	R0.15	2	0.3	0.27	45	4	
WMRB230-00303-045-S04	R0.15	3	0.3	0.27	45	4	
WMRB230-00401-045-S04	R0.2	1	0.4	0.37	45	4	
WMRB230-004015-045-S04	R0.2	1.5	0.4	0.37	45	4	
WMRB230-00402-045-S04	R0.2	2	0.4	0.37	45	4	
WMRB230-00403-045-S04	R0.2	3	0.4	0.37	45	4	
WMRB230-00404-045-S04	R0.2	4	0.4	0.37	45	4	
WMRB230-00405-045-S04	R0.2	5	0.4	0.37	45	4	
WMRB230-00406-045-S04	R0.2	6	0.4	0.37	45	4	
WMRB230-00501-045-S04	R0.25	1	0.5	0.46	45	4	
WMRB230-00502-045-S04	R0.25	2	0.5	0.46	45	4	
WMRB230-00503-045-S04	R0.25	3	0.5	0.46	45	4	
WMRB230-00504-045-S04	R0.25	4	0.5	0.46	45	4	
WMRB230-00505-045-S04	R0.25	5	0.5	0.46	45	4	
WMRB230-00506-045-S04	R0.25	6	0.5	0.46	45	4	
WMRB230-00508-045-S04	R0.25	8	0.5	0.46	45	4	
WMRB230-00510-045-S04	R0.25	10	0.5	0.46	45	4	