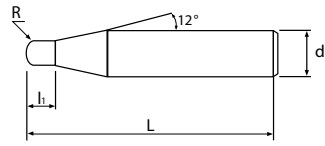


# HMB230

# HMB230

HY-MAX 볼 엔드밀 2날 헬릭스 30°  
HY-MAX Ball End Mill 2-Flute Helix 30°

볼  
Ball  
라디우스  
Radius  
스퀘어  
Square



\* 적용 피삭재 (Applicable Work Material)  
: 최적 (Most Suitable)  
: 가능 (Applicable)

CARBIDE ULTRA
TiSiN
2
30° Helix
R ±0.005
R ±0.01
D 0/-0.008
D 0/-0.015
Shank h5
3D

R < 3      R ≥ 3      D < 6      D ≥ 6

### 피삭재 Work Material

P			H			M	S	N		
탄소강 Carbon Steels	합금강 Alloy Steels	프리하든강 Pre-Hardened Steels	열처리강 Hardened Steels			스테인레스강 Stainless Steels	내열합금강 Heat-resistant alloys	동 Copper	알루미늄합금 Aluminum Alloys	흑연 Graphite
S45C/S50C ~800 N/mm <sup>2</sup>	SCM ~35HRC	NAK/HPM ~45HRC	SKD61 ~55HRC	SKD11 ~60HRC	SKH ~62HRC					

단위(mm)/Unit(mm)

모델번호 Model No.	볼반경 Radius of Ball Nose	날장 Length of Cut	전장 Overall Length	생크경 Shank Dia	비고 Remark
	R	L <sub>1</sub>	L	d	
HMB230-003003-040-S04	R0.15	0.3	40	4	
HMB230-004004-040-S04	R0.2	0.4	40	4	
HMB230-005005-040-S04	R0.25	0.5	40	4	
HMB230-006006-040-S04	R0.3	0.6	40	4	
HMB230-008008-040-S04	R0.4	0.8	40	4	
HMB230-01002-050-S04	R0.5	2	50	4	
HMB230-01002-050-S06	R0.5	2	50	6	
HMB230-01503-050-S04	R0.75	3	50	4	
HMB230-01503-050-S06	R0.75	3	50	6	
HMB230-02004-050-S04	R1	4	50	4	
HMB230-02004-050-S06	R1	4	50	6	
HMB230-02505-050-S04	R1.25	5	50	4	
HMB230-02505-050-S06	R1.25	5	50	6	
HMB230-03006-050-S03	R1.5	6	50	3	
HMB230-03006-050-S04	R1.5	6	50	4	
HMB230-03005-050-S06	R1.5	5	50	6	
HMB230-03006-060-S06	R1.5	6	60	6	
HMB230-03507-060-S06	R1.75	7	60	6	
HMB230-04008-050-S04	R2	8	50	4	
HMB230-04008-060-S04	R2	8	60	4	
HMB230-04008-080-S04	R2	8	80	4	
HMB230-04007-050-S06	R2	7	50	6	
HMB230-04008-070-S06	R2	8	70	6	
HMB230-05008-060-S06	R2.5	8	60	6	
HMB230-05010-090-S06	R2.5	10	90	6	
HMB230-06010-060-S06	R3	10	60	6	
HMB230-06010-075-S06	R3	10	75	6	

모델번호 Model No.	볼반경 Radius of Ball Nose	날장 Length of Cut	전장 Overall Length	생크경 Shank Dia	비고 Remark
	R	L <sub>1</sub>	L	d	
HMB230-06012-090-S06	R3	12	90	6	
HMB230-07014-100-S08	R3.5	14	100	8	
HMB230-08012-060-S08	R4	12	60	8	
HMB230-08013-080-S08	R4	13	80	8	
HMB230-08014-100-S08	R4	14	100	8	
HMB230-10016-070-S10	R5	16	70	10	
HMB230-10018-100-S10	R5	18	100	10	
HMB230-10018-130-S10	R5	18	130	10	
HMB230-12018-080-S12	R6	18	80	12	
HMB230-12022-100-S12	R6	22	100	12	
HMB230-12022-130-S12	R6	22	130	12	
HMB230-12022-150-S12	R6	22	150	12	
HMB230-16030-130-S16	R8	30	130	16	

볼  
Ball  
라디우스  
Radius  
스퀘어  
Square