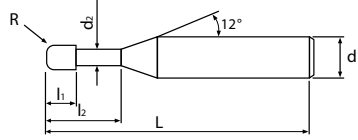


DMRB230

DMRB230

DIA-MAX 리브볼 엔드밀 2날 헬릭스 30°

DIA-MAX Rib Ball End Mill 2-Flute Helix 30°



* 적용피삭재(Applicable Work Material)
: 최적(Most Suitable)
: 가능(Applicable)



D<1 D≥1

P			H			M	S	N		
탄소강 Carbon Steels	합금강 Alloy Steels	프리하든강 Pre-Hardened Steels	열처리강 Hardened Steels			스테인레스강 Stainless Steels	내열합금강 Heat-resistant alloys	동 Copper	알루미늄합금 Aluminum Alloys	흑연 Graphite
S45C/S50C ~800 N/mm ²	SCM ~35HRC	NAK/HPM ~45HRC	SKD61 ~55HRC	SKD11 ~60HRC	SKH ~62HRC					

단위(mm)/Unit(mm)

모델번호 Model No.	볼반경 Radius of Ball Nose	유효장 Effective Length	날장 Length of Cut	목부경 Neck Diameter	전장 Overall Length	샙크경 Shank Dia	비고 Remark
	R	l ₂	l ₁	d ₂	L	d	
DMRB230-00201-045-S04	R0.1	1	0.2	0.17	45	4	
DMRB230-003015-045-S04	R0.15	1.5	0.3	0.25	45	4	
DMRB230-00302-045-S04	R0.15	2	0.3	0.25	45	4	
DMRB230-00303-045-S04	R0.15	3	0.3	0.25	45	4	
DMRB230-00402-045-S04	R0.2	2	0.4	0.35	45	4	
DMRB230-00403-045-S04	R0.2	3	0.4	0.35	45	4	
DMRB230-00404-045-S04	R0.2	4	0.4	0.35	45	4	
DMRB230-00502-045-S04	R0.25	2	1	0.45	45	4	
DMRB230-00504-045-S04	R0.25	4	1	0.45	45	4	
DMRB230-00506-045-S04	R0.25	6	1	0.45	45	4	
DMRB230-00508-045-S04	R0.25	8	1	0.45	45	4	
DMRB230-00602-045-S04	R0.3	2	1.2	0.55	45	4	
DMRB230-00604-045-S04	R0.3	4	1.2	0.55	45	4	
DMRB230-00606-045-S04	R0.3	6	1.2	0.55	45	4	
DMRB230-00608-045-S04	R0.3	8	1.2	0.55	45	4	
DMRB230-00610-060-S04	R0.3	10	1.2	0.55	60	4	
DMRB230-00612-060-S04	R0.3	12	1.2	0.55	60	4	
DMRB230-00615-060-S04	R0.3	15	1.2	0.55	60	4	
DMRB230-00620-060-S04	R0.3	20	1.2	0.55	60	4	
DMRB230-00804-045-S04	R0.4	4	1.6	0.75	45	4	
DMRB230-00806-045-S04	R0.4	6	1.6	0.75	45	4	
DMRB230-00808-045-S04	R0.4	8	1.6	0.75	45	4	
DMRB230-00810-060-S04	R0.4	10	1.6	0.75	60	4	
DMRB230-00815-060-S04	R0.4	15	1.6	0.75	60	4	
DMRB230-00820-060-S04	R0.4	20	1.6	0.75	60	4	
DMRB230-01004-050-S04	R0.5	4	2	0.95	50	4	
DMRB230-01006-050-S04	R0.5	6	2	0.95	50	4	
DMRB230-01008-050-S04	R0.5	8	2	0.95	50	4	

모델번호 Model No.	볼반경 Radius of Ball Nose	유효장 Effective Length	날장 Length of Cut	목부경 Neck Diameter	전장 Overall Length	샙크경 Shank Dia	비고 Remark
	R	l ₂	l ₁	d ₂	L	d	
DMRB230-01010-060-S04	R0.5	10	2	0.95	60	4	
DMRB230-01012-060-S04	R0.5	12	2	0.95	60	4	
DMRB230-01016-060-S04	R0.5	16	2	0.95	60	4	
DMRB230-01020-060-S04	R0.5	20	2	0.95	60	4	
DMRB230-01025-080-S04	R0.5	25	2	0.95	80	4	
DMRB230-01030-080-S04	R0.5	30	2	0.95	80	4	
DMRB230-01035-080-S04	R0.5	35	2	0.95	80	4	
DMRB230-01040-080-S04	R0.5	40	2	0.95	80	4	
DMRB230-01506-050-S04	R0.75	6	3	1.45	50	4	
DMRB230-01508-050-S04	R0.75	8	3	1.45	50	4	
DMRB230-01510-050-S04	R0.75	10	3	1.45	50	4	
DMRB230-01512-050-S04	R0.75	12	3	1.45	50	4	
DMRB230-01516-080-S04	R0.75	16	3	1.45	80	4	
DMRB230-01520-080-S04	R0.75	20	3	1.45	80	4	
DMRB230-01525-080-S04	R0.75	25	3	1.45	80	4	
DMRB230-01530-080-S04	R0.75	30	3	1.45	80	4	
DMRB230-02006-050-S04	R1	6	4	1.9	50	4	
DMRB230-02010-050-S04	R1	10	4	1.9	50	4	
DMRB230-02012-050-S04	R1	12	4	1.9	50	4	
DMRB230-02016-050-S04	R1	16	4	1.9	50	4	
DMRB230-02016-080-S04	R1	16	4	1.9	80	4	
DMRB230-02020-080-S04	R1	20	4	1.9	80	4	
DMRB230-02025-080-S04	R1	25	4	1.9	80	4	
DMRB230-02030-080-S04	R1	30	4	1.9	80	4	
DMRB230-02035-080-S04	R1	35	4	1.9	80	4	
DMRB230-02040-100-S04	R1	40	4	1.9	100	4	
DMRB230-02050-100-S04	R1	50	4	1.9	100	4	
DMRB230-03012-060-S04	R1.5	12	6	2.7	60	4	
DMRB230-03016-060-S04	R1.5	16	6	2.7	60	4	
DMRB230-03020-060-S04	R1.5	20	6	2.7	60	4	
DMRB230-03020-100-S04	R1.5	20	6	2.7	100	4	
DMRB230-03030-100-S04	R1.5	30	6	2.7	100	4	
DMRB230-03040-100-S04	R1.5	40	6	2.7	100	4	
DMRB230-03050-100-S04	R1.5	50	6	2.7	100	4	
DMRB230-04020-060-S04	R2	20	12	3.7	60	4	
DMRB230-04030-080-S04	R2	30	12	3.7	80	4	
DMRB230-04040-100-S04	R2	40	12	3.7	100	4	
DMRB230-04040-130-S04	R2	40	12	3.7	130	4	
DMRB230-06025-080-S06	R3	25	15	5.7	80	6	
DMRB230-06040-105-S06	R3	40	15	5.7	105	6	
DMRB230-06050-150-S06	R3	50	15	5.7	150	6	
DMRB230-08030-080-S08	R4	30	20	7.7	80	8	
DMRB230-08040-105-S08	R4	40	20	7.7	105	8	
DMRB230-08050-150-S08	R4	50	20	7.7	150	8	
DMRB230-10050-105-S10	R5	50	22	9.7	105	10	
DMRB230-10060-160-S10	R5	60	22	9.7	160	10	
DMRB230-12055-105-S12	R6	55	25	11.7	105	12	
DMRB230-12060-160-S12	R6	60	25	11.7	160	12	