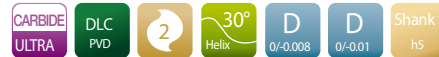
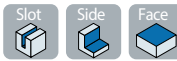
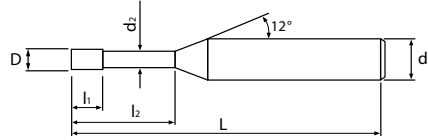


CMRE230

CMRE230

CO-MAX 리브스퀘어엔드밀2날 헬릭스30°

CO-MAX Rib Square End Mill 2-Flute Helix30°



D ≤ 2 2 < D < 6

* 적용피삭재(Applicable Work Material)
: 최적(Most Suitable)
: 가능(Applicable)

P			H			M	S	N		
탄소강 Carbon Steels	합금강 Alloy Steels	프리하든강 Pre-Hardened Steels	열처리강 Hardened Steels			스테인레스강 Stainless Steels	내열합금강 Heat-resistant alloys	동 Copper	알루미늄합금 Aluminum Alloys	흑연 Graphite
S45C/S50C ~800 N/mm ²	SCM ~35HRC	NAK/HPM ~45HRC	SKD61 ~55HRC	SKD11 ~60HRC	SKH ~62HRC					

단위(mm)/Unit(mm)

모델번호 Model No.	인선직경 Dia of Mill	유효장 Effective Length	날장 Length of Cut	목부경 Neck Diameter	전장 Overall Length	생크경 Shank Dia	비고 Remark
	D	l ₂	l ₁	d ₂	L	d	
CMRE230-001005-045-S04	0.1	0.5	0.1	0.085	45	4	
CMRE230-0015005-045-S04	0.15	0.5	0.15	0.13	45	4	
CMRE230-001501-045-S04	0.15	1	0.15	0.13	45	4	
CMRE230-00201-045-S04	0.2	1	0.2	0.18	45	4	
CMRE230-002015-045-S04	0.2	1.5	0.2	0.18	45	4	
CMRE230-00202-045-S04	0.2	2	0.2	0.18	45	4	
CMRE230-00301-045-S04	0.3	1	0.3	0.27	45	4	
CMRE230-003015-045-S04	0.3	1.5	0.3	0.27	45	4	
CMRE230-00302-045-S04	0.3	2	0.3	0.27	45	4	
CMRE230-00303-045-S04	0.3	3	0.3	0.27	45	4	
CMRE230-00402-045-S04	0.4	2	0.4	0.37	45	4	
CMRE230-00403-045-S04	0.4	3	0.4	0.37	45	4	
CMRE230-00404-045-S04	0.4	4	0.4	0.37	45	4	
CMRE230-00502-045-S04	0.5	2	0.5	0.46	45	4	
CMRE230-00503-045-S04	0.5	3	0.5	0.46	45	4	
CMRE230-00504-045-S04	0.5	4	0.5	0.46	45	4	
CMRE230-00506-045-S04	0.5	6	0.5	0.46	45	4	
CMRE230-00602-045-S04	0.6	2	0.6	0.56	45	4	
CMRE230-00603-045-S04	0.6	3	0.6	0.56	45	4	
CMRE230-00604-045-S04	0.6	4	0.6	0.56	45	4	
CMRE230-00606-045-S04	0.6	6	0.6	0.56	45	4	
CMRE230-00608-045-S04	0.6	8	0.6	0.56	45	4	
CMRE230-00802-045-S04	0.8	2	0.8	0.76	45	4	
CMRE230-00804-045-S04	0.8	4	0.8	0.76	45	4	
CMRE230-00806-045-S04	0.8	6	0.8	0.76	45	4	
CMRE230-00808-045-S04	0.8	8	0.8	0.76	45	4	
CMRE230-01004-045-S04	1	4	1.5	0.96	45	4	

모델번호 Model No.	인선직경 Dia of Mill	유효장 Effective Length	날장 Length of Cut	목부경 Neck Diameter	전장 Overall Length	생크경 Shank Dia	비고 Remark
	D	l ₂	l ₁	d ₂	L	d	
CMRE230-01006-045-S04	1	6	1.5	0.96	45	4	
CMRE230-01008-045-S04	1	8	1.5	0.96	45	4	
CMRE230-01010-045-S04	1	10	1.5	0.96	45	4	
CMRE230-01012-045-S04	1	12	1.5	0.96	45	4	
CMRE230-01506-045-S04	1.5	6	2.3	1.45	45	4	
CMRE230-01508-045-S04	1.5	8	2.3	1.45	45	4	
CMRE230-01510-045-S04	1.5	10	2.3	1.45	45	4	
CMRE230-01512-045-S04	1.5	12	2.3	1.45	45	4	
CMRE230-02006-045-S04	2	6	3	1.9	45	4	
CMRE230-02008-045-S04	2	8	3	1.9	45	4	
CMRE230-02010-045-S04	2	10	3	1.9	45	4	
CMRE230-02012-045-S04	2	12	3	1.9	45	4	
CMRE230-02016-050-S04	2	16	3	1.9	50	4	
CMRE230-02020-060-S04	2	20	3	1.9	60	4	
CMRE230-03012-050-S06	3	12	4.5	2.85	50	6	
CMRE230-03016-060-S06	3	16	4.5	2.85	60	6	
CMRE230-03020-060-S06	3	20	4.5	2.85	60	6	
CMRE230-03025-070-S06	3	25	4.5	2.85	70	6	
CMRE230-03030-070-S06	3	30	4.5	2.85	70	6	
CMRE230-04012-050-S06	4	12	6	3.85	50	6	
CMRE230-04016-060-S06	4	16	6	3.85	60	6	
CMRE230-04020-060-S06	4	20	6	3.85	60	6	
CMRE230-04025-070-S06	4	25	6	3.85	70	6	
CMRE230-04030-070-S06	4	30	6	3.85	70	6	