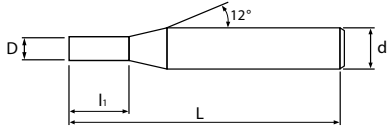


CME230

CO-MAX 스퀘어엔드밀2날 헬릭스30°

CO-MAX Square End Mill 2-Flute Helix30°



D≤2 2<D<6 D≥6

* 적용 피삭재(Applicable Work Material)
: 최적(Most Suitable)
: 가능(Applicable)

P			H			M	S	N		
탄소강 Carbon Steels	합금강 Alloy Steels	프리하든강 Pre-Hardened Steels	열처리강 Hardened Steels			스테인레스강 Stainless Steels	내열합금강 Heat-resistant alloys	동 Copper	알루미늄합금 Aluminium Alloys	흑연 Graphite
S45C/S50C ~800 N/mm ²	SCM ~35HRC	NAK/HPM ~45HRC	SKD61 ~55HRC	SKD11 ~60HRC	SKH ~62HRC					

단위(mm)/Unit(mm)

모델번호 Model No.	인선직경 Dia of Mill	날장 Length of Cut	전장 Overall Length	생크경 Shank Dia	비고 Remark
	D	l ₁	L	d	
CME230-0010015-040-S04	0.1	0.15	40	4	
CME230-010025-045-S04	1	2.5	45	4	
NEW CME230-01004-045-S04	1	4	45	4	
NEW CME230-01504-045-S04	1.5	4	45	4	
CME230-02006-045-S04	2	6	45	4	
NEW CME230-02008-045-S04	2	8	45	4	
CME230-03010-050-S06	3	10	50	6	
NEW CME230-04012-050-S06	4	12	50	6	
CME230-06015-060-S06	6	15	60	6	
CME230-08020-065-S08	8	20	65	8	
CME230-10025-070-S10	10	25	70	10	
CME230-12030-080-S12	12	30	80	12	

CO-MAX

볼
Ball

라디우스
Radius

스퀘어
Square